

# Beneteau Flyer 8.8 Spacedeck

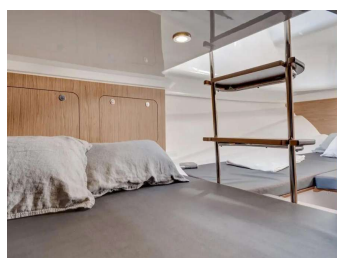
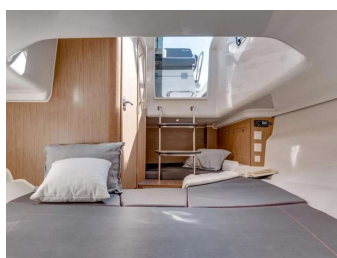
£99,500

 used

 2020

 29.6 ft

 Surrey, United Kingdom



## Details

**Condition:** used  
**Year:** 2020  
**Boat Type:** Flyer 8.8 Spacedeck  
**Fuel Type:** Petrol/Gasoline  
**Tax Status:** Pricing inc. VAT

**Manufacturer:** Beneteau  
**Model:** Flyer 8.8 Spacedeck  
**Length:** 29.6 ft  
**Location:** Surrey United Kingdom  
**ID / Stock:** 3806

### Bates Wharf Marine Sales Ltd

**BATES/WHARF**

Bridge Wharf, Chertsey, KT16 8LG  
01932 571141  
sales@bateswharf.co.uk  
www.bateswharf.co.uk

## Description

The Beneteau Flyer 8.8 SPACEdeck embodies the pinnacle of a range consistently ranked number one in trials and recognized with numerous international awards. Certified B8/C 11, she accommodates up to 11 people on board, ensuring an excellent level of comfort and safety.

## Engines

<b>Total Power:</b>	250 hp	<b>Max Speed:</b>	0 Knots
<b>Engine Make:</b>	Suzuki DF250APX		
<b>Cruising Speed:</b>	0 Knots		
<b>Fuel Type:</b>	Petrol/Gasoline	<b>Fuel Tank Cap. :</b>	0

## Measurements

<b>Length:</b>	29.6ft / 9.03m	<b>Length at Waterline:</b>	0ft / 0m
<b>Beam:</b>	9.65ft / 2.95m	<b>Draft:</b>	0
<b>Max Draft:</b>	0	<b>Length on Deck:</b>	0ft
<b>Displacement:</b>	0		
<b>Total Cabins:</b>	1		
<b>Cabin Headroom:</b>	0	<b>Heads:</b>	1

## Features

### Beneteau Flyer 8.8 SPACEdeck

The Beneteau Flyer 8.8 SPACEdeck embodies the pinnacle of a range consistently ranked number one in trials and recognized with numerous international awards. Certified B8/C 11, she accommodates up to 11 people on board, ensuring an excellent level of comfort and safety.

Total Boat Value: £127,193 // STOCK BOAT PROMOTION: £99,500 VAT PAID

### DESIGN

The Flyer 8.8 SPACEdeck features a sporty design that is instantly recognizable on the water. It boasts a broad bow, profiled lateral struts, an elegant windshield, and distinctive front and side lines. The rear of the boat can be transformed into a fishing station, complete with a live bait well and a work table. The pronounced V-shaped bow and almost vertical hull surfaces effectively deflect water.

### INFINITELY POWERFUL

The Flyer 8.8 SPACEdeck includes a spacious forward saloon with two L-shaped seats that convert into sun loungers, along with ample storage. It also features a large indoor cabin with a separate toilet. Experience the sea on this outboard speedboat that combines power and elegance with an agile, seaworthy hull, equipped with the latest generation of Air Step.

### Hull And Deck

#### HULL

Technology: Air Step

Patent: Beneteau

Composition: Sandwich (Polyester resin - Glass fiber - Balsa core)

White hull

Winching ring on bow

DECK

Composition: Sandwich (Polyester resin - Glass fiber - Balsa core)

Deck Equipment

MOORING LINES - MOORING

- Stainless steel bow fitting with roller
- Self-bailing mooring locker with hatch cover
- Eye bolt to secure mooring
- 2 Forward cleats
- 2 Cleats amidships
- 2 Aft cleats in aluminium, 250 mm / 10" SAFETY ON DECK

- Stainless steel open pulpit
- 2 Catwalks
- Wide sideways around the console:
- Port: 0.37m / 13"
- Starboard: 0.37m / 13"

Cockpit

- Wide and deep self-bailing cockpit (Freeboard: 0.74m / 25")
- 4-person aft seat with stainless steel handrail on backrest, convertible into sun pad: 1.80 x 0.90m / 511 x 211
- Removable cockpit table
- 1 Large lockable central cockpit locker with gas piston assisted opening (BIB location)
- 1 Port cockpit locker
- 1 Starboard cockpit locker
- 1 Locked storage on starboard aft platform (400 L / 106 US Gal) hermetic and ventilated rotomoulded fuel tank, located in the back of cockpit locker
- Fuel filler on transom
- Portside access to sea
- Security door
- Telescopic swimming ladder
- Cockpit shower
- All-round light on samson post
- Navigation lights (Port and starboard)
- Forward saloon with 3 storage lockers
- 2 Cup holders
- Console seat and handrail
- 2 Compartments, teak TOP, and handrail

Helm

- Windscreen PMMA light grey tinted
- Handrail around the windscreen
- Center console
- Dashboard with location for electronics, max. 10" screen, rpm and trim
- Fuel gauge
- 12V socket
- USB socket
- Sports steering wheel
- Location for top gas throttle (Throttle and instruments delivered with pre-rigging)
- Fitted footrests
- Hydraulic steering
- Leaning post / High comfort pilot and copilot bench seat
- Copilot hand rail
- Cabin access through sliding door in translucent grey PMMA

Interior

- Alpi grey cedar wood fittings
- Brown oak laminated floors

#### Forward Cabin

- Headroom = 0.70 - 1.89m
- Stowage compartments in wood (Port / Starboard / forward)
- Transformable into a U-shaped saloon (Optional mattress)
- Convertible into sleeping area of supplement (2.02 x 1.50m / 68 x 411)
- Optional mattress
- Lighting from 1 ceiling light (LED)
- Ventilation from deck hatch and opening porthole
- Side glazing
- Interior curtains

#### Electrical

- 12 V electrical panel
- Installation for engine batteries delivered with the pre-rigging or refrigerator (Maximum: 2 batteries not delivered)

#### Plumbing

- 1 Manual bilge pump
- Electric bilge pumps
- Pressured cold water optional extra: Hot water

#### Factory Fitted Extras

- Comfort Pack: Electric windlass, 42L fridge, Dashboard specific decoration, 220V electrical circuit with battery charger, Gas cooker, Swim platforms, Auto trim tabs, Water heater.
- Electronic Pack Upgrade: Garmin 9" Touch Multifunction Display (no chart), Lowrance HDI sensor.
- Sound Pack Upgrade: Fusion MS-RA70N with 2 x 50w speakers
- Mooring & anchoring kit
- 2 x Cockpit folding seats
- Console and leaning post covers
- Wakeboard skiing mast
- Bow thruster
- Forward cabin cushions
- 600L fuel tank
- Pre rig Suzuki
- Solid wood slatted floor

#### UK Extra's

- Delivery ex Bates Wharf UK
- UK PDI & Commissioning
- Commissioning Kit

Disclaimer: The Company offers the details of this vessel in good faith but cannot guarantee or warrant the accuracy of this information nor warrant the condition of the vessel. A buyer should instruct his agents, or his surveyors, to investigate such details as the buyer desires validated. This vessel is offered subject to prior sale, price change, or withdrawal without notice.



Palma 2016 - Mention obligatoire / Mandatory credit. Photo Nicolas Chais pour Beneteau



Palma 2016 - Mention obligatoire / Mandatory credit. Photo Nicolas Chais pour Beneteau

