

# Bluefield R500

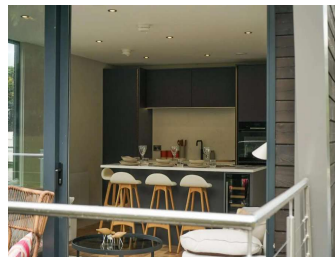
£386,500

 new

 2023

 50.86 ft

 Chertsey, United Kingdom



## Details

**Condition:** new  
**Year:** 2023  
**Boat Type:** R500  
**Fuel Type:**  
**Tax Status:** Pricing exc. VAT

**Manufacturer:** Bluefield  
**Model:** R500  
**Length:** 50.86 ft  
**Location:** Chertsey United Kingdom  
**ID / Stock:** 3900

### Bates Wharf Marine Sales Ltd

**BATES/WHARF**

Bridge Wharf, Chertsey, KT16 8LG  
01932 571141  
sales@bateswharf.co.uk  
www.bateswharf.co.uk

## Description

The R500 offers expansive interiors, cutting-edge design, and panoramic views, providing unmatched comfort and luxury on the water. This eco-friendly home features top-of-the-line amenities, ensuring a sustainable and serene living experience. Ideal for those seeking the perfect blend of innovation and elegance, the Bluefield Floating Home R500 redefines waterfront living. Embrace the extraordinary and make the R500 your personal oasis on the water.

## Engines

**Max Speed:** 0 Knots  
**Cruising Speed:** 0 Knots  
**Fuel Tank Cap. :** 0

## Measurements

<b>Length:</b>	50.86ft / 15.51m	<b>Length at Waterline:</b>	0ft / 0m
<b>Beam:</b>	16.08ft / 4.91m	<b>Draft:</b>	0
<b>Max Draft:</b>	0	<b>Length on Deck:</b>	0ft
<b>Displacement:</b>	0		
<b>Cabin Headroom:</b>	0	<b>Water Tank Cap. :</b>	0

## Features

### Bluefield R500

The R500 offers expansive interiors, cutting-edge design, and panoramic views, providing unmatched comfort and luxury on the water. This eco-friendly home features top-of-the-line amenities, ensuring a sustainable and serene living experience. Ideal for those seeking the perfect blend of innovation and elegance, the Bluefield Floating Home R500 redefines waterfront living. Embrace the extraordinary and make the R500 your personal oasis on the water.

### R Series Description

Our R (Residential) Series offers top of the range houseboat models. These luxury "floating apartments" are designed to offer a modern blend of style and comfort. With high end finishes and quality craftsmanship inside and out, the R Series really redefines "life on water". Perfect for first time buyers, a family holiday home, a retirement home for those wishing to downsize, or an investment for those looking to enter the buy to let market.

### Construction and Materials

We use current best practice from the construction, manufacturing and marine industries which reflects our no compromise approach to quality and attention to detail. We deliberately use a restricted palette of materials and colours to maintain the modern aesthetic and all the materials used throughout are the same as you would find in any high end apartment constructed on land.

### Kitchen Features

The top of the range kitchen comes with Egger Perfect Sense kitchen doors and quartz worktops all available in a choice of finishes and colours as part of our standard specification. Also included are branded appliances such as a Bora downdraft hob, Bosch 8 oven, Quooker Pro 3 Fusion Tap and Franke Quartz undermount sink, as well as LED shadow lighting.

### Bathroom Features

The luxury bathroom features a walk in shower, toilet, wash hand basin and towel radiator and there is a range of finishes available for the floors and walls, or upgrades if required.

### SMART Home System

Bluefield can also incorporate a SMART home system, which allows the control of lights, sound, heating, TV, and ventilation at the control of a button. Features such as automatic blinds, windows, and security alarm can also be added, all accessible through a wall-mounted tablet.

### Space and Layout

The R500 offers 500SQFT of internal space and has 2 double bedrooms (sleeping 4-6 with the addition of a sofa bed in the living area), and there are spacious balconies front and rear to enjoy some al fresco dining when the weather allows.

There is also the ability to customise both the interior and exterior finishes, including the addition of a roof terrace with access via an internal or external staircase. This flexibility allows residents to personalise the houseboat to their specific style and taste.

### Key Features:

- Wood cladding and aluminium double glazed windows.
- Concrete pontoon for maximum stability.
- Spacious balconies front and rear.
- Stainless steel handrail post & 9 strand safety wire.
- High specification designer kitchen and premium appliances.
- Optional roof terrace with interior or exterior staircase access.

### Bluefield R500 Houseboat Standard Specification Includes:

- Open plan kitchen / dining / living area
- Timber cladding with aluminium flashing
- Composite decking
- Galvanised chassis
- Fully insulated frame

- Acoustic internal partitions
- Stainless steel post & wire handrail
- Building Control compliant
- Concrete pontoon
- Transfer tank and pump
- Mains fed electricity and water
- Domestic hot water system
- Low E thermal glazing
- Highly insulated fabric
- Fully compliant bathroom with WC, WHB & shower
- Concealed cistern WC
- Gravity fed drainage
- Fully fitted kitchen with island & branded appliances
- Stainless steel fixtures with USB C
- LED lighting throughout
- Solid timber flooring
- Solid core inner doors
- Plaster walls & ceiling
- Moulded architraves & skirting
- Acoustic internal partitions
- Heat & smoke detectors
- SMART home technology ready
- Renewable energy options available
- Wide range of cladding options
- Prefabricated in factory and delivered to site
- Warranty: It is 10 years on structure and floatation, 1 year on general defects, 25 year design life.
- Moored with anchor arms / pile guides / mooring lines

#### Bluefield R500 Upgrades:

- Upgraded Charred Tiger Cladding
- Upgraded Kitchen Island - Bora Hob, Quooker Tap Wine Cooler, and LED Cabinet Lights.

#### Important Notes:

PLEASE NOTE: This is a static floating home and has no powered engine of its own. Delivery is ex Chertsey but onward delivery and install can be quoted and arranged. Mains electricity and sewage connection is required.

VAT IS NOT APPLICABLE ON BLUEFIELD FLOATING HOMES

Disclaimer: The Company offers the details of this vessel in good faith but cannot guarantee or warrant the accuracy of this information nor warrant the condition of the vessel. A buyer should instruct his agents, or his surveyors, to investigate such details as the buyer desires validated. This vessel is offered subject to prior sale, price change, or withdrawal without notice.

