

Bluefield M250

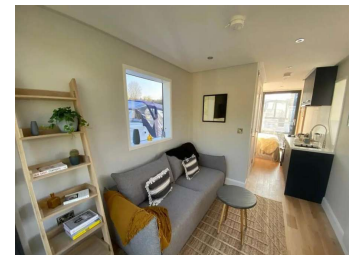
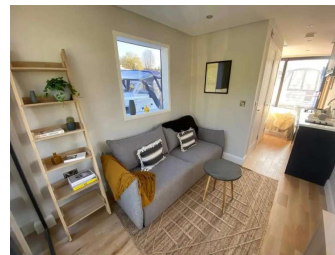
£172,000

 new

 2025

 39.38 ft

 Chertsey, United Kingdom



Details

Condition: new
Year: 2025
Boat Type: M250
Fuel Type:
Tax Status: Pricing exc. VAT

Manufacturer: Bluefield
Model: M250
Length: 39.38 ft
Location: Chertsey United Kingdom
ID / Stock: 3924

Bates Wharf Marine Sales Ltd

BATES/WHARF

Bridge Wharf, Chertsey, KT16 8LG
01932 571141
sales@bateswharf.co.uk
www.bateswharf.co.uk

Description

Engines

Max Speed:	0 Knots
Cruising Speed:	0 Knots
Fuel Tank Cap. :	0

Measurements

Length:	39.38ft / 12.01m	Length at Waterline:	0ft / 0m
Beam:	11.82ft / 3.61m	Draft:	0
Max Draft:	0	Length on Deck:	0ft
Displacement:	0		
Cabin Headroom:	0	Water Tank Cap. :	0

Features

Bluefield M250

Redefining The Marina Experience

The Marina Series has a more boat-like aesthetic and has been designed specifically to fit within an existing marina berth. These houseboats have a number of other features that make them suitable for marina living such as composite decking and catamaran pontoons made of GRP (Glass Reinforced Plastic) for stability in the water. The aluminium cladding (available in a selection of colours and colour combinations), as well as the stainless steel handrails, help to reduce weight and improve durability.

Entering the houseboat through floor to ceiling sliding patio doors leads into an open-plan living, kitchen, and dining area. The abundance of windows on all sides floods this space with natural light, creating a bright and inviting atmosphere. The fully equipped kitchen comes in a choice of door style, colour and worktop finish, and includes essential appliances such as a combi oven, hob, and fridge. There is additional storage space provided by a generously sized walk-in cupboard. The bathroom is equipped with toilet, wash hand basin, walk-in shower, and towel radiator.

Both the front and rear balconies offer plenty of space for outdoor furniture, allowing residents to enjoy external relaxation or entertain guests.

The M250 is available with 1 bedroom, and with the addition of a sofa bed in the living area can sleep 2-4 people.

There is also the ability to customise both the interior and exterior finishes, allowing customers to personalise the houseboat to their specific style and taste.

Key Features:

- GRP catamaran pontoons, ensuring additional stability and durability even in rough waters.
- Balconies front and rear.
- Stainless steel handrail post & 4 strand safety wire.
- Aluminium cladding providing protection against the elements.

Bluefield M250 Houseboat standard specification includes:

- Open plan kitchen / living area
- PPC Aluminium cladding
- Composite decking
- Galvanised chassis
- Full insulated frame
- Stainless steel post & 4 wire handrail
- GRP catamaran pontoons
- Holding tank and pump
- Mains fed electricity and water
- Domestic hot water system
- Low E thermal glazing
- Highly insulated fabric
- Fully compliant bathroom with WC, WHB & shower
- Concealed cistern WC
- Gravity fed drainage
- Fully fitted kitchen & appliances
- Stainless steel fixtures
- Recessed LED lighting throughout
- High quality engineered flooring
- Solid core inner doors
- Plaster walls & ceiling
- Moulded architraves & skirting
- Acoustic internal partitions
- Heat & smoke detectors
- SMART home technology ready
- Prefabricated in factory and delivered to site
- Warranty: 10 Years on structure, floatation, Fabric and Cladding - Year on all other defects under the definitions of new build homes as defined on NHBC website - Other products and appliances that have a longer warranty will be covered under that manufacturer standard warranty terms - 25 Year design life
- Moored with cleats

Disclaimer: The Company offers the details of this vessel in good faith but cannot guarantee or warrant the accuracy of this information nor warrant the condition of the vessel. A buyer should instruct his agents, or his surveyors, to investigate such details as the buyer desires validated. This vessel is offered subject to prior sale, price change, or withdrawal without notice.

