

# Princess V48

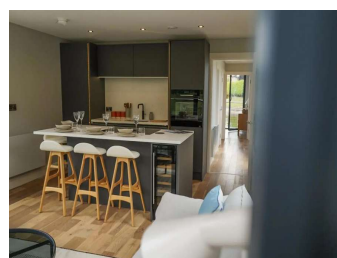
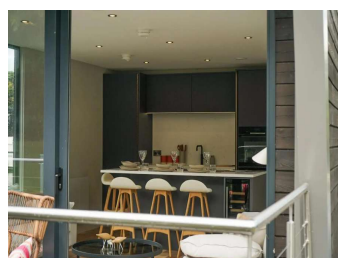
€599,000

 used

 2017

 50.83 ft

 Sotogrande, Spain



## Details

**Condition:** used  
**Year:** 2017  
**Boat Type:** V48  
**Fuel Type:** Diesel  
**Tax Status:** Pricing inc. VAT

**Manufacturer:** Princess  
**Model:** V48  
**Length:** 50.83 ft  
**Location:** Sotogrande Spain  
**ID / Stock:** 6353

### Bates Wharf Marine Sales Ltd

**BATES/WHARF**

Hamble River Boatyard, Bridge Rd, Swanwick, Southampton SO31 7EB  
01489 576888  
southampton@bateswharf.co.uk  
www.bateswharf.co.uk

## Description

2017 Princess V48 Open for sale from MXG Yachts- Introducing the stunning Princess V48 with hardtop and sunroof, an exceptional luxury yacht in excellent condition which has been meticulously maintained and updated. She is powered by twin Volvo IPS 600 engines with just 370 engine hours and can achieve up to 34 knots.Â Â

## Engines

<b>Engine Make:</b>	Volvo IPS 600	<b>Engine Hours:</b>	370
<b>Max Speed:</b>	0 Knots		
<b>Cruising Speed:</b>	0 Knots		
<b>Fuel Type:</b>	Diesel	<b>Fuel Tank Cap. :</b>	0

## Measurements

<b>Length:</b>	50.83ft / 15.5m	<b>Length at Waterline:</b>	0ft / 0m
<b>Beam:</b>	13.49ft / 4.12m	<b>Draft:</b>	3.75
<b>Max Draft:</b>	1.14	<b>Length on Deck:</b>	0ft
<b>Displacement:</b>	13700		
<b>Cabin Headroom:</b>	0	<b>Water Tank Cap. :</b>	0

## Features

### Summary

2017 Princess V48 Open for sale from MXG Yachts- Introducing the stunning Princess V48 with hardtop and sunroof, an exceptional luxury yacht in excellent condition which has been meticulously maintained and updated. She is powered by twin Volvo IPS 600 engines with just 370 engine hours and can achieve up to 34 knots.Â Â

With two luxurious cabins, she comfortably sleeps four, with an option to accommodate up to six guests. She comes fitted with a long list of extras and features including a gyroscopic stabiliser, upgraded Air Conditioning including for cockpit, hydraulic swimming platform, a garage for tenders up to 3.25m, and and electric opening roof.Â Â TheÂ exterior has also been fully reupholstered, offering a fresh and modern look. (Williams 285 tender available by separate negotiation). Donâ€™t miss the opportunity to own this beautifully appointed Princess V48, EU VAT paid, contact us today for a viewing at your convenience!

### Steering System

Joystick Control

### Deck and Hull

- Teak-laid transom platform, cockpit deck and stairs toÂ side decks
- Reversible electric anchor winch with foredeck andÂ helm position controls
- Stainless-steel cleats, fairleads and handrails
- Remote control searchlight
- Stainless Steel anchor chain upgrade
- Coppercoat Antifoul (recent reapplication)Cockpit

- Seating with teak table
- 32000 BTU Airconditioning, very effective- also reverse cycle heating
- Electric hotplate BBQ
- Icemaker

- Lockable gas strut assisted hatch to engine room
  - Transom gate leading to bathing platform with optional electro-hydraulic raise/lower mechanism, foldaway swimming ladder and hot and cold shower
  - Liferaft storage locker
  - Locker housing 240v shore support inlet
  - Locker with remote fuel cocks
  - Cockpit cover
  - Transom hatch to stern lazarette
  - Bin Cupboard
  - The V48 also incorporates: electro-hydraulic bathing platform as standard, aft sunpad and tender garage (up to 3.5m), large seating area aft with fixed teak table, electrically operated canvas sun roof, wetbar including sink, coolbox and storage with hotplate barbecue, L-shaped seating opposite the helm and sliding door to lower accommodation
- Accommodations  
DECK SALOON

- U-shaped sofa and dining table
  - Sideboard unit with glass and bottle storage and refrigerator
  - Electric opening roof
  - Stereo radio/MP3 with saloon and cockpit speakers
  - Timber-laid floor
- LOWER DECK

- Seating area with table
  - 24v and 220/240v electrical control panels
  - Storage lockers
  - Fusion stereo radio/MP3 with saloon and cockpit speakers
  - Harmon Kardon with Blu-ray
  - 28inch LED TV
  - Air Conditioning throughout lower deck, 32000BTU, with reverse cycle heating. Outlets in all saloon, cabins and bathrooms. (Generator upgraded to 11kw)
- OWNER'S STATEROOM

- Large double bed with drawers below
  - Wardrobe with shelves
  - Sofa
  - 32inch LED TV
  - Harmon Kardon with Blu-ray
  - Storage lockers and drawers
  - Overhead and individual berth lights
  - En suite bathroom
- FORWARD GUEST CABIN

- Large double bed with drawers below
  - 28inch LED TV
  - Wardrobe with shelves
  - Storage lockers
  - Deck hatch with integrated skylight and blind
  - Overhead and individual berth lights
  - En suite bathroom with day access
- Galley

- 3-zone ceramic hob
  - Dishwasher (6 place)
  - Combination microwave/conventional oven with grill
  - Stainless-steel sink with monobloc mixer tap
  - Full height fridge/freezer
  - Waste bin
  - Storage cupboards, drawers and lockers
- Power and Drive Systems

- Twin Volvo IPS-600 with joystick control
  - Volvo DPS System (Position holding)
  - Volvo active corrosion protection system
  - Power-assisted electronic steering system with hydraulic back-up
  - Electronic engine and gear shift controls
  - Engine room extractor fan
  - Gyro stabiliser- Seakeeper
- Electrical  
24 Volt

- 4 x heavy-duty batteries for engine starting
  - 4 x heavy-duty auxiliary batteries
  - 40 amp battery charger charging both banks of batteries via automatic switch charging system
  - 2.9m hydraulic passarelle, letterbox style
  - 120kg Bow Thruster
  - LED lighting throughout
  - Underwater lights
  - Icemaker in cockpit 220/240 Volt
- Upgraded 11kW diesel generator in own sound shield with water cooled specially silenced exhaust
  - Shore support inlet in cockpit locker with storage for cable
  - Polarity check system
  - Earth leakage safety trip
  - Power points to all areas Helm Position
- Twin helm seat with bolster
  - Raymarine Navigation equipment, p70R Autopilot, e165 Chartplotter/GPS, SHD Radar 49inch, AIS Class B
  - Windscreen demist from calorifier
  - Electric opening helmsman's window
  - Full engine instrumentation including fuel gauges, joystick control and rudder position indicator
  - Navigation system including VHF/RT, speed and distance log, echo sounder with alarm and high speed magnetic compass
  - Controls for windscreen wipers, bilge pump, anchor winch and trim tabs (with indicator)
  - Chart table Engine Notes
- 2 x IPS 600 (435mhp) Max speed: aprox 34 knots  
370 hours (August 2024)

Disclaimer: The Company offers the details of this vessel in good faith but cannot guarantee or warrant the accuracy of this information nor warrant the condition of the vessel. A buyer should instruct his agents, or his surveyors, to investigate such details as the buyer desires validated. This vessel is offered subject to prior sale, price change, or withdrawal without notice.



